

**DISTRICT COURT - CSRBA**  
**Fifth Judicial District**  
**County of Twin Falls - State of Idaho**

**JUN 10 2022**

By \_\_\_\_\_ Clerk  
 \_\_\_\_\_ Deputy Clerk

IN THE DISTRICT COURT OF THE FIFTH JUDICIAL DISTRICT OF THE  
 STATE OF IDAHO, IN AND FOR THE COUNTY OF TWIN FALLS

In Re CSRBA ) PARTIAL DECREE PURSUANT TO I.R.C.P. 54(b)  
 ) FOR FEDERAL RESERVED  
 Case No. 49576 )  
 ) WATER RIGHT NO. 94-09523A

NAME AND ADDRESS: UNITED STATES OF AMERICA ACTING THROUGH  
 USDA FOREST SERVICE  
 550 W FORT ST MSC 033  
 BOISE ID 83724

SOURCE: See Attachment 1, Column A TRIBUTARY: See Attachment 1, Column B

Sources are located on National Forest System Land in the Yellow Dog Creek-Middle North Fork Coeur d'Alene River subwatershed (HUC12 170103010403).

QUANTITY: The amount of water necessary to control and suppress forest fires.

PRIORITY DATE: 11/06/1906

POINT OF DIVERSION: See Attachment 1, Columns C through G

PURPOSE AND PERIOD OF USE: 

PURPOSE OF USE	PERIOD OF USE
Administrative-Fire Suppression	01/01 - 12/31

PLACE OF USE: National Forests in Idaho and the Kaniksu, Lolo and Kootenai National Forests in Montana.

See Attachment 2.

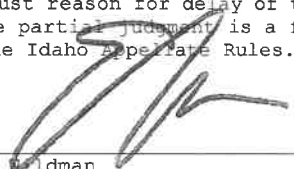
OTHER PROVISIONS NECESSARY FOR DEFINITION OR ADMINISTRATION OF THIS WATER RIGHT:

This right is limited to the intermittent diversion and use of water for the purpose of suppressing wildfires. This water right shall not be used as a basis to prevent the future appropriation of water.

This partial decree is subject to such general provisions necessary for the definition of the rights or for the efficient administration of the water rights as may be ultimately determined by the Court at a point in time no later than the entry of a final unified decree. Idaho Code § 42-1412(6).

RULE 54(b) CERTIFICATE

With respect to the issues determined by the above partial judgment it is hereby CERTIFIED, in accordance with Rule 54(b), I.R.C.P., that the court has determined that there is no just reason for delay of the entry of a final judgment and that the court has and does hereby direct that the above partial judgment is a final judgment upon which execution may issue and an appeal may be taken as provided by the Idaho Appellate Rules.

  
 \_\_\_\_\_  
 Eric J. Waldman  
 Presiding Judge of the  
 Coeur d'Alene-Spokane River Adjudication

# Attachment 1

	A	B	C	D	E	F	G
001	SOURCE NAME	TO TRIBUTARY	TOWNSHIP	RANGE	SECTION	QQ	SURVEY CODE AND NUMBER
002	Jack Creek	North Fork Coeur d'Alene River	50N	03E	01		
003	Uranus Creek	North Fork Coeur d'Alene River	50N	03E	01		
004	Unnamed Stream	North Grizzly Creek	50N	03E	02		
005	North Grizzly Creek	Downey Creek	50N	03E	03		
006	Unnamed Stream	West Fork Downey Creek	50N	03E	05		
007	Unnamed Stream	Uranus Creek	50N	03E	12		
008	Unnamed Stream	Uranus Creek	50N	03E	12		
009	Unnamed Stream	North Fork Coeur d'Alene River	50N	04E	03		
010	Unnamed Stream	North Fork Coeur d'Alene River	50N	04E	04		
011	North Fork Coeur d'Alene River	Coeur d'Alene River	50N	04E	05		
012	Unnamed Stream	North Fork Coeur d'Alene River	50N	04E	05		
013	Unnamed Stream	North Fork Coeur d'Alene River	50N	04E	05		
014	Unnamed Stream	North Fork Coeur d'Alene River	50N	04E	05		
015	Unnamed Stream	Uranus Creek	50N	04E	05		
016	Unnamed Stream	Uranus Creek	50N	04E	05		
017	Uranus Creek	North Fork Coeur d'Alene River	50N	04E	05		
018	Keller Creek	North Fork Coeur d'Alene River	50N	04E	06		
019	North Fork Coeur d'Alene River	Coeur d'Alene River	50N	04E	06		
020	Unnamed Stream	North Fork Coeur d'Alene River	50N	04E	06		
021	Unnamed Stream	North Fork Coeur d'Alene River	50N	04E	06		
022	Unnamed Stream	Uranus Creek	50N	04E	06		
023	Unnamed Stream	Uranus Creek	50N	04E	06		
024	Unnamed Stream	Uranus Creek	50N	04E	06		
025	Unnamed Stream	Uranus Creek	50N	04E	06		
026	Unnamed Stream	Uranus Creek	50N	04E	06		
027	Uranus Creek	North Fork Coeur d'Alene River	50N	04E	06		
028	Unnamed Stream	Uranus Creek	50N	04E	07		
029	Unnamed Stream	Uranus Creek	50N	04E	07		
030	Unnamed Stream	Uranus Creek	50N	04E	07		
031	Unnamed Stream	Uranus Creek	50N	04E	07		
032	Unnamed Stream	Uranus Creek	50N	04E	07		
033	Unnamed Stream	Uranus Creek	50N	04E	07		
034	Unnamed Stream	Uranus Creek	50N	04E	07		
035	Unnamed Stream	Uranus Creek	50N	04E	07		
036	Unnamed Stream	Uranus Creek	50N	04E	07		
037	Uranus Creek	North Fork Coeur d'Alene River	50N	04E	07		
038	Creaky Creek	North Fork Coeur d'Alene River	50N	04E	08		

# Attachment 1

	A	B	C	D	E	F	G
001	SOURCE NAME	TO TRIBUTARY	TOWNSHIP	RANGE	SECTION	QQ	SURVEY CODE AND NUMBER
039	North Fork Coeur d'Alene River	Coeur d'Alene River	50N	04E	08		
040	Unnamed Stream	Creaky Creek	50N	04E	08		
041	Unnamed Stream	North Fork Coeur d'Alene River	50N	04E	08		
042	Unnamed Stream	North Fork Coeur d'Alene River	50N	04E	08		
043	Unnamed Stream	Uranus Creek	50N	04E	08		
044	Unnamed Stream	Uranus Creek	50N	04E	08		
045	North Fork Coeur d'Alene River	Coeur d'Alene River	50N	04E	09		
046	Unnamed Stream	North Fork Coeur d'Alene River	50N	04E	09		
047	Unnamed Stream	North Fork Coeur d'Alene River	50N	04E	09		
048	Unnamed Stream	North Fork Coeur d'Alene River	50N	04E	09		
049	Unnamed Stream	North Fork Coeur d'Alene River	50N	04E	09		
050	Clee Creek	North Fork Coeur d'Alene River	50N	04E	10		
051	North Fork Coeur d'Alene River	Coeur d'Alene River	50N	04E	10		
052	Unnamed Stream	North Fork Coeur d'Alene River	50N	04E	10		
053	Unnamed Stream	North Fork Coeur d'Alene River	50N	04E	10		
054	Unnamed Stream	North Fork Coeur d'Alene River	50N	04E	10		
055	Unnamed Stream	North Fork Coeur d'Alene River	50N	04E	10		
056	Avery Creek	North Fork Coeur d'Alene River	50N	04E	11		
057	Clee Creek	North Fork Coeur d'Alene River	50N	04E	11		
058	North Fork Avery Creek	Avery Creek	50N	04E	11		
059	Unnamed Stream	Avery Creek	50N	04E	11		
060	Clee Creek	North Fork Coeur d'Alene River	50N	04E	12		
061	North Fork Avery Creek	Avery Creek	50N	04E	12		
062	Avery Creek	North Fork Coeur d'Alene River	50N	04E	13		
063	Avery Creek	North Fork Coeur d'Alene River	50N	04E	14	NENE	
064	Unnamed Stream	Avery Creek	50N	04E	14	NWNE	
065	Avery Creek	North Fork Coeur d'Alene River	50N	04E	14	NWNW	
066	Unnamed Stream	North Fork Coeur d'Alene River	50N	04E	14	NWNW	
067	Unnamed Stream	North Fork Coeur d'Alene River	50N	04E	14	SWNW	
068	Avery Creek	North Fork Coeur d'Alene River	50N	04E	15	NENE	L 1
069	Unnamed Stream	North Fork Coeur d'Alene River	50N	04E	15	NENE	L 1
070	Unnamed Stream	North Fork Coeur d'Alene River	50N	04E	15	NENW	
071	Avery Creek	North Fork Coeur d'Alene River	50N	04E	15	NWNE	L 3
072	North Fork Coeur d'Alene River	Coeur d'Alene River	50N	04E	15	NWNE	L 3
073	Unnamed Stream	North Fork Coeur d'Alene River	50N	04E	15	NWNE	L 3
074	Unnamed Stream	North Fork Coeur d'Alene River	50N	04E	15	NWNW	
075	North Fork Coeur d'Alene River	Coeur d'Alene River	50N	04E	15	SESW	

# Attachment 1

	A	B	C	D	E	F	G
001	SOURCE NAME	TO TRIBUTARY	TOWNSHIP	RANGE	SECTION	QQ	SURVEY CODE AND NUMBER
076	North Fork Coeur d'Alene River	Coeur d'Alene River	50N	04E	15	SESW	L 10
077	Unnamed Stream	North Fork Coeur d'Alene River	50N	04E	15	SWNW	
078	Unnamed Stream	North Fork Coeur d'Alene River	50N	04E	15	SWSE	
079	North Fork Coeur d'Alene River	Coeur d'Alene River	50N	04E	15	SWSW	
080	North Fork Coeur d'Alene River	Coeur d'Alene River	50N	04E	15	SWSW	L 10
081	North Fork Coeur d'Alene River	Coeur d'Alene River	50N	04E	16		
082	Short Creek	North Fork Coeur d'Alene River	50N	04E	16		
083	Unnamed Stream	North Fork Coeur d'Alene River	50N	04E	16		
084	Unnamed Stream	North Fork Coeur d'Alene River	50N	04E	16		
085	Unnamed Stream	Short Creek	50N	04E	16		
086	Creaky Creek	North Fork Coeur d'Alene River	50N	04E	17		
087	Short Creek	North Fork Coeur d'Alene River	50N	04E	17		
088	Unnamed Stream	Creaky Creek	50N	04E	17		
089	Unnamed Stream	Creaky Creek	50N	04E	17		
090	Trouble Creek	North Fork Coeur d'Alene River	50N	04E	18		
091	Unnamed Stream	Trouble Creek	50N	04E	18		
092	Trouble Creek	North Fork Coeur d'Alene River	50N	04E	19		
093	Creaky Creek	North Fork Coeur d'Alene River	50N	04E	20		
094	North Fork Coeur d'Alene River	Coeur d'Alene River	50N	04E	20		
095	Trouble Creek	North Fork Coeur d'Alene River	50N	04E	20		
096	Creaky Creek	North Fork Coeur d'Alene River	50N	04E	21		
097	North Fork Coeur d'Alene River	Coeur d'Alene River	50N	04E	21		
098	Short Creek	North Fork Coeur d'Alene River	50N	04E	21		
099	Unnamed Stream	North Fork Coeur d'Alene River	50N	04E	21		
100	Unnamed Stream	North Fork Coeur d'Alene River	50N	04E	21		
101	Unnamed Stream	North Fork Coeur d'Alene River	50N	04E	21		
102	Unnamed Stream	North Fork Coeur d'Alene River	50N	04E	21		
103	North Fork Coeur d'Alene River	Coeur d'Alene River	50N	04E	22		
104	Unnamed Stream	North Fork Coeur d'Alene River	50N	04E	22		
105	Unnamed Stream	North Fork Coeur d'Alene River	50N	04E	22		
106	North Fork Coeur d'Alene River	Coeur d'Alene River	50N	04E	29		
107	Unnamed Stream	Yellow Dog Creek	51N	02E	13		
108	Unnamed Stream	Yellow Dog Creek	51N	02E	24		
109	Tourist Creek	North Fork Coeur d'Alene River	51N	03E	01		
110	Unnamed Stream	Tourist Creek	51N	03E	01		
111	Unnamed Stream	Tourist Creek	51N	03E	01		
112	Teddy Creek	North Fork Coeur d'Alene River	51N	03E	02		

# Attachment 1

	A	B	C	D	E	F	G
001	SOURCE NAME	TO TRIBUTARY	TOWNSHIP	RANGE	SECTION	QQ	SURVEY CODE AND NUMBER
113	Tourist Creek	North Fork Coeur d'Alene River	51N	03E	02		
114	Unnamed Stream	Teddy Creek	51N	03E	02		
115	Unnamed Stream	Tourist Creek	51N	03E	02		
116	Unnamed Stream	Tourist Creek	51N	03E	02		
117	Teddy Creek	North Fork Coeur d'Alene River	51N	03E	03		
118	Teddy Creek	North Fork Coeur d'Alene River	51N	03E	10	NENE	
119	Unnamed Stream	Teddy Creek	51N	03E	10	NENE	
120	North Fork Coeur d'Alene River	Coeur d'Alene River	51N	03E	10	NWSE	
121	North Fork Coeur d'Alene River	Coeur d'Alene River	51N	03E	10	NWSW	
122	North Fork Coeur d'Alene River	Coeur d'Alene River	51N	03E	10	NWSW	L 4
123	Teddy Creek	North Fork Coeur d'Alene River	51N	03E	10	NWSW	L 4
124	Teddy Creek	North Fork Coeur d'Alene River	51N	03E	10	SENE	
125	North Fork Coeur d'Alene River	Coeur d'Alene River	51N	03E	10	SESE	
126	Teddy Creek	North Fork Coeur d'Alene River	51N	03E	10	SWNE	
127	North Fork Coeur d'Alene River	Coeur d'Alene River	51N	03E	10	SWSE	
128	Unnamed Stream	Tourist Creek	51N	03E	11	NENE	
129	Unnamed Stream	Tourist Creek	51N	03E	11	NESE	
130	Tourist Creek	North Fork Coeur d'Alene River	51N	03E	11	NWNE	
131	Unnamed Stream	Tourist Creek	51N	03E	11	NWNE	
132	Unnamed Stream	Teddy Creek	51N	03E	11	NWNW	
133	Tourist Creek	North Fork Coeur d'Alene River	51N	03E	11	NWSE	
134	Unnamed Stream	Tourist Creek	51N	03E	11	NWSE	
135	Unnamed Stream	Tourist Creek	51N	03E	11	NWSE	
136	Unnamed Stream	Tourist Creek	51N	03E	11	SENE	
137	Unnamed Stream	Tourist Creek	51N	03E	11	SENE	
138	North Fork Coeur d'Alene River	Coeur d'Alene River	51N	03E	11	SESE	
139	North Fork Coeur d'Alene River	Coeur d'Alene River	51N	03E	11	SESE	L 1
140	North Fork Coeur d'Alene River	Coeur d'Alene River	51N	03E	11	SESW	
141	North Fork Coeur d'Alene River	Coeur d'Alene River	51N	03E	11	SESW	L 3
142	Tourist Creek	North Fork Coeur d'Alene River	51N	03E	11	SWNE	
143	Unnamed Stream	Tourist Creek	51N	03E	11	SWNE	
144	North Fork Coeur d'Alene River	Coeur d'Alene River	51N	03E	11	SWSW	
145	North Fork Coeur d'Alene River	Coeur d'Alene River	51N	03E	11	SWSW	L 4
146	Bruce Creek	North Fork Coeur d'Alene River	51N	03E	12		
147	Morris Creek	North Fork Coeur d'Alene River	51N	03E	12		
148	Unnamed Stream	Bruce Creek	51N	03E	12		
149	Unnamed Stream	Tourist Creek	51N	03E	12		

# Attachment 1

	A	B	C	D	E	F	G
001	SOURCE NAME	TO TRIBUTARY	TOWNSHIP	RANGE	SECTION	QQ	SURVEY CODE AND NUMBER
150	Valitons Creek	North Fork Coeur d'Alene River	51N	03E	12		
151	Bruce Creek	North Fork Coeur d'Alene River	51N	03E	13		
152	Dry Creek	North Fork Coeur d'Alene River	51N	03E	13		
153	Ferguson Creek	North Fork Coeur d'Alene River	51N	03E	13		
154	Morris Creek	North Fork Coeur d'Alene River	51N	03E	13		
155	Unnamed Stream	Bruce Creek	51N	03E	13		
156	Unnamed Stream	Valitons Creek	51N	03E	13		
157	Valitons Creek	North Fork Coeur d'Alene River	51N	03E	13		
158	Downey Creek	North Fork Coeur d'Alene River	51N	03E	14	NENW	
159	North Fork Coeur d'Alene River	Coeur d'Alene River	51N	03E	14	NESE	
160	North Fork Coeur d'Alene River	Coeur d'Alene River	51N	03E	14	NESE	L 7
161	Valitons Creek	North Fork Coeur d'Alene River	51N	03E	14	NESE	
162	Valitons Creek	North Fork Coeur d'Alene River	51N	03E	14	NESE	L 6
163	Downey Creek	North Fork Coeur d'Alene River	51N	03E	14	NWNE	
164	North Fork Coeur d'Alene River	Coeur d'Alene River	51N	03E	14	NWNW	
165	Yellow Dog Creek	North Fork Coeur d'Alene River	51N	03E	14	NWNW	
166	Yellow Dog Creek	North Fork Coeur d'Alene River	51N	03E	14	NWNW	L 3
167	North Fork Coeur d'Alene River	Coeur d'Alene River	51N	03E	14	NWSE	L 7
168	Downey Creek	North Fork Coeur d'Alene River	51N	03E	14	NWSW	
169	Bruce Creek	North Fork Coeur d'Alene River	51N	03E	14	SENE	
170	Bruce Creek	North Fork Coeur d'Alene River	51N	03E	14	SENE	L 5
171	North Fork Coeur d'Alene River	Coeur d'Alene River	51N	03E	14	SENE	
172	North Fork Coeur d'Alene River	Coeur d'Alene River	51N	03E	14	SENE	L 4
173	Downey Creek	North Fork Coeur d'Alene River	51N	03E	14	SENW	
174	Downey Creek	North Fork Coeur d'Alene River	51N	03E	14	SWNW	
175	North Fork Coeur d'Alene River	Coeur d'Alene River	51N	03E	14	SWSE	
176	North Fork Coeur d'Alene River	Coeur d'Alene River	51N	03E	14	SWSE	L 8
177	Unnamed Stream	North Fork Coeur d'Alene River	51N	03E	14	SWSE	L 8
178	Beetle Creek	North Fork Coeur d'Alene River	51N	03E	15	NENE	L 1
179	North Fork Coeur d'Alene River	Coeur d'Alene River	51N	03E	15	NENE	
180	North Fork Coeur d'Alene River	Coeur d'Alene River	51N	03E	15	NENE	L 1
181	Yellow Dog Creek	North Fork Coeur d'Alene River	51N	03E	15	NENE	L 1
182	Downey Creek	North Fork Coeur d'Alene River	51N	03E	15	NESE	
183	Beetle Creek	North Fork Coeur d'Alene River	51N	03E	15	NWNE	
184	Yellow Dog Creek	North Fork Coeur d'Alene River	51N	03E	15	NWSE	
185	Ash Creek	Yellow Dog Creek	51N	03E	15	NWSW	
186	Unnamed Stream	Yellow Dog Creek	51N	03E	15	NWSW	

## Attachment 1

	A	B	C	D	E	F	G
001	SOURCE NAME	TO TRIBUTARY	TOWNSHIP	RANGE	SECTION	QQ	SURVEY CODE AND NUMBER
187	Yellow Dog Creek	North Fork Coeur d'Alene River	51N	03E	15	SENE	
188	Downey Creek	North Fork Coeur d'Alene River	51N	03E	15	SESE	
189	Yellow Dog Creek	North Fork Coeur d'Alene River	51N	03E	15	SWNE	
190	Downey Creek	North Fork Coeur d'Alene River	51N	03E	15	SWSE	
191	Yellow Dog Creek	North Fork Coeur d'Alene River	51N	03E	15	SWSE	
192	Ash Creek	Yellow Dog Creek	51N	03E	15	SWSW	
193	Unnamed Stream	Yellow Dog Creek	51N	03E	15	SWSW	
194	Unnamed Stream	Yellow Dog Creek	51N	03E	15	SWSW	
195	Yellow Dog Creek	North Fork Coeur d'Alene River	51N	03E	15	SWSW	
196	Ash Creek	Yellow Dog Creek	51N	03E	16		
197	Unnamed Stream	Yellow Dog Creek	51N	03E	16		
198	Yellow Dog Creek	North Fork Coeur d'Alene River	51N	03E	16		
199	Ash Creek	Yellow Dog Creek	51N	03E	17		
200	Unnamed Stream	Yellow Dog Creek	51N	03E	17		
201	Unnamed Stream	Yellow Dog Creek	51N	03E	17		
202	Yellow Dog Creek	North Fork Coeur d'Alene River	51N	03E	17		
203	Unnamed Stream	Yellow Dog Creek	51N	03E	18		
204	Unnamed Stream	Yellow Dog Creek	51N	03E	18		
205	Unnamed Stream	Yellow Dog Creek	51N	03E	19		
206	Unnamed Stream	Yellow Dog Creek	51N	03E	19		
207	Unnamed Stream	Yellow Dog Creek	51N	03E	19		
208	Unnamed Stream	Yellow Dog Creek	51N	03E	19		
209	Yellow Dog Creek	North Fork Coeur d'Alene River	51N	03E	19		
210	Unnamed Stream	Yellow Dog Creek	51N	03E	20		
211	Unnamed Stream	Yellow Dog Creek	51N	03E	20		
212	Unnamed Stream	Yellow Dog Creek	51N	03E	20		
213	Unnamed Stream	Yellow Dog Creek	51N	03E	20		
214	Yellow Dog Creek	North Fork Coeur d'Alene River	51N	03E	20		
215	Unnamed Stream	Yellow Dog Creek	51N	03E	21	NWNE	
216	Yellow Dog Creek	North Fork Coeur d'Alene River	51N	03E	21	NWNE	
217	Yellow Dog Creek	North Fork Coeur d'Alene River	51N	03E	21	NWNW	
218	Unnamed Stream	West Fork Downey Creek	51N	03E	21	SESW	
219	Downey Creek	North Fork Coeur d'Alene River	51N	03E	22	NESE	
220	North Grizzly Creek	Downey Creek	51N	03E	22	NESE	
221	Downey Creek	North Fork Coeur d'Alene River	51N	03E	22	NWNE	
222	Downey Creek	North Fork Coeur d'Alene River	51N	03E	22	NWSE	
223	Downey Creek	North Fork Coeur d'Alene River	51N	03E	22	SENE	

# Attachment 1

	A	B	C	D	E	F	G
001	SOURCE NAME	TO TRIBUTARY	TOWNSHIP	RANGE	SECTION	QQ	SURVEY CODE AND NUMBER
224	North Grizzly Creek	Downey Creek	51N	03E	22	SESE	
225	Unnamed Stream	North Grizzly Creek	51N	03E	22	SESE	
226	Downey Creek	North Fork Coeur d'Alene River	51N	03E	22	SESW	
227	Downey Creek	North Fork Coeur d'Alene River	51N	03E	22	SWNE	
228	Downey Creek	North Fork Coeur d'Alene River	51N	03E	22	SWSE	
229	Downey Creek	North Fork Coeur d'Alene River	51N	03E	22	SWSW	
230	North Fork Coeur d'Alene River	Coeur d'Alene River	51N	03E	23		
231	Unnamed Stream	North Fork Coeur d'Alene River	51N	03E	23		
232	Unnamed Stream	North Fork Coeur d'Alene River	51N	03E	23		
233	Unnamed Stream	North Grizzly Creek	51N	03E	23		
234	Dry Creek	North Fork Coeur d'Alene River	51N	03E	24	NENE	
235	Ferguson Creek	North Fork Coeur d'Alene River	51N	03E	24	NENW	
236	Unnamed Stream	North Fork Coeur d'Alene River	51N	03E	24	NESE	
237	Dry Creek	North Fork Coeur d'Alene River	51N	03E	24	NESW	
238	Ferguson Creek	North Fork Coeur d'Alene River	51N	03E	24	NESW	
239	Dry Creek	North Fork Coeur d'Alene River	51N	03E	24	NWNE	
240	Ferguson Creek	North Fork Coeur d'Alene River	51N	03E	24	NWNE	
241	Dry Creek	North Fork Coeur d'Alene River	51N	03E	24	NWSE	
242	Unnamed Stream	North Fork Coeur d'Alene River	51N	03E	24	NWSE	
243	Ferguson Creek	North Fork Coeur d'Alene River	51N	03E	24	NWSW	L 3
244	North Fork Coeur d'Alene River	Coeur d'Alene River	51N	03E	24	NWSW	
245	North Fork Coeur d'Alene River	Coeur d'Alene River	51N	03E	24	NWSW	L 2
246	North Fork Coeur d'Alene River	Coeur d'Alene River	51N	03E	24	NWSW	L 3
247	Unnamed Stream	North Fork Coeur d'Alene River	51N	03E	24	SENE	
248	Ferguson Creek	North Fork Coeur d'Alene River	51N	03E	24	SENW	
249	North Fork Coeur d'Alene River	Coeur d'Alene River	51N	03E	24	SESE	
250	Steep Creek	North Fork Coeur d'Alene River	51N	03E	24	SESE	
251	Steep Creek	North Fork Coeur d'Alene River	51N	03E	24	SESE	L 6
252	Dry Creek	North Fork Coeur d'Alene River	51N	03E	24	SESW	
253	Dry Creek	North Fork Coeur d'Alene River	51N	03E	24	SWNE	
254	North Fork Coeur d'Alene River	Coeur d'Alene River	51N	03E	24	SWNW	
255	North Fork Coeur d'Alene River	Coeur d'Alene River	51N	03E	24	SWNW	L 2
256	North Fork Coeur d'Alene River	Coeur d'Alene River	51N	03E	24	SWSE	
257	Unnamed Stream	North Fork Coeur d'Alene River	51N	03E	24	SWSE	L 5
258	North Fork Coeur d'Alene River	Coeur d'Alene River	51N	03E	24	SWSW	
259	North Fork Coeur d'Alene River	Coeur d'Alene River	51N	03E	25	NENE	
260	Steep Creek	North Fork Coeur d'Alene River	51N	03E	25	NENE	



# Attachment 1

	A	B	C	D	E	F	G
001	SOURCE NAME	TO TRIBUTARY	TOWNSHIP	RANGE	SECTION	QQ	SURVEY CODE AND NUMBER
261	Falls Creek	North Fork Coeur d'Alene River	51N	03E	25	NENW	
262	Falls Creek	North Fork Coeur d'Alene River	51N	03E	25	NENW	L 4
263	North Fork Coeur d'Alene River	Coeur d'Alene River	51N	03E	25	NENW	
264	Harvey Creek	North Fork Coeur d'Alene River	51N	03E	25	NESE	
265	Harvey Creek	North Fork Coeur d'Alene River	51N	03E	25	NESE	L 7
266	North Fork Coeur d'Alene River	Coeur d'Alene River	51N	03E	25	NESE	
267	Harvey Creek	North Fork Coeur d'Alene River	51N	03E	25	NESW	
268	Sissons Creek	North Fork Coeur d'Alene River	51N	03E	25	NESW	
269	North Fork Coeur d'Alene River	Coeur d'Alene River	51N	03E	25	NWNE	
270	North Fork Coeur d'Alene River	Coeur d'Alene River	51N	03E	25	NWNW	
271	North Fork Coeur d'Alene River	Coeur d'Alene River	51N	03E	25	NWNW	L 6
272	Harvey Creek	North Fork Coeur d'Alene River	51N	03E	25	NWSE	
273	Sissons Creek	North Fork Coeur d'Alene River	51N	03E	25	SENE	
274	Falls Creek	North Fork Coeur d'Alene River	51N	03E	25	SENW	
275	Sissons Creek	North Fork Coeur d'Alene River	51N	03E	25	SENW	
276	Mercury Creek	North Fork Coeur d'Alene River	51N	03E	25	SESE	L 9
277	North Fork Coeur d'Alene River	Coeur d'Alene River	51N	03E	25	SESE	
278	North Fork Coeur d'Alene River	Coeur d'Alene River	51N	03E	25	SESE	L 9
279	Sissons Creek	North Fork Coeur d'Alene River	51N	03E	25	SWNE	
280	Falls Creek	North Fork Coeur d'Alene River	51N	03E	25	SWNW	
281	Mercury Creek	North Fork Coeur d'Alene River	51N	03E	25	SWSE	
282	Falls Creek	North Fork Coeur d'Alene River	51N	03E	26		
283	North Fork Coeur d'Alene River	Coeur d'Alene River	51N	03E	26		
284	North Grizzly Creek	Downey Creek	51N	03E	26		
285	Unnamed Stream	North Grizzly Creek	51N	03E	26		
286	Unnamed Stream	North Grizzly Creek	51N	03E	26		
287	Unnamed Stream	North Grizzly Creek	51N	03E	26		
288	Unnamed Stream	North Grizzly Creek	51N	03E	26		
289	Unnamed Stream	North Grizzly Creek	51N	03E	26		
290	Unnamed Stream	North Grizzly Creek	51N	03E	26		
291	Unnamed Stream	North Grizzly Creek	51N	03E	26		
292	Downey Creek	North Fork Coeur d'Alene River	51N	03E	27		
293	North Grizzly Creek	Downey Creek	51N	03E	27		
294	Unnamed Stream	North Grizzly Creek	51N	03E	27		
295	Unnamed Stream	North Grizzly Creek	51N	03E	27		
296	Unnamed Stream	North Grizzly Creek	51N	03E	27		
297	Unnamed Stream	North Grizzly Creek	51N	03E	27		

# Attachment 1

	A	B	C	D	E	F	G
001	SOURCE NAME	TO TRIBUTARY	TOWNSHIP	RANGE	SECTION	QQ	SURVEY CODE AND NUMBER
298	Downey Creek	North Fork Coeur d'Alene River	51N	03E	28		
299	East Fork Downey Creek	Downey Creek	51N	03E	28		
300	Unnamed Stream	West Fork Downey Creek	51N	03E	28		
301	Unnamed Stream	West Fork Downey Creek	51N	03E	28		
302	West Fork Downey Creek	Downey Creek	51N	03E	28		
303	Unnamed Stream	Yellow Dog Creek	51N	03E	29	NENW	
304	Unnamed Stream	West Fork Downey Creek	51N	03E	29	NESE	
305	West Fork Downey Creek	Downey Creek	51N	03E	29	NESE	
306	Unnamed Stream	Yellow Dog Creek	51N	03E	29	NWSW	
307	Unnamed Stream	Yellow Dog Creek	51N	03E	29	SENW	
308	Unnamed Stream	West Fork Downey Creek	51N	03E	29	SESE	
309	Unnamed Stream	West Fork Downey Creek	51N	03E	29	SESE	
310	West Fork Downey Creek	Downey Creek	51N	03E	29	SESE	
311	Unnamed Stream	Yellow Dog Creek	51N	03E	29	SWNW	
312	West Fork Downey Creek	Downey Creek	51N	03E	29	SWSE	
313	Unnamed Stream	Yellow Dog Creek	51N	03E	29	SWSW	
314	Unnamed Stream	Yellow Dog Creek	51N	03E	30		
315	Yellow Dog Creek	North Fork Coeur d'Alene River	51N	03E	30		
316	Unnamed Stream	West Fork Downey Creek	51N	03E	32		
317	Unnamed Stream	West Fork Downey Creek	51N	03E	32		
318	Unnamed Stream	West Fork Downey Creek	51N	03E	32		
319	West Fork Downey Creek	Downey Creek	51N	03E	32		
320	East Fork Downey Creek	Downey Creek	51N	03E	33		
321	Unnamed Stream	West Fork Downey Creek	51N	03E	33		
322	North Grizzly Creek	Downey Creek	51N	03E	34		
323	Unnamed Stream	North Grizzly Creek	51N	03E	34		
324	Unnamed Stream	North Grizzly Creek	51N	03E	34		
325	North Grizzly Creek	Downey Creek	51N	03E	35		
326	Unnamed Stream	North Grizzly Creek	51N	03E	35		
327	Unnamed Stream	North Grizzly Creek	51N	03E	35		
328	Unnamed Stream	North Grizzly Creek	51N	03E	35		
329	Jack Creek	North Fork Coeur d'Alene River	51N	03E	36		
330	Mercury Creek	North Fork Coeur d'Alene River	51N	03E	36		
331	North Fork Coeur d'Alene River	Coeur d'Alene River	51N	03E	36		
332	Short Creek	North Fork Coeur d'Alene River	51N	03E	36		
333	Unnamed Stream	Jack Creek	51N	03E	36		
334	Unnamed Stream	North Grizzly Creek	51N	03E	36		

# Attachment 1






	A	B	C	D	E	F	G
001	SOURCE NAME	TO TRIBUTARY	TOWNSHIP	RANGE	SECTION	QQ	SURVEY CODE AND NUMBER
335	Valitons Creek	North Fork Coeur d'Alene River	51N	04E	07		
336	Dry Creek	North Fork Coeur d'Alene River	51N	04E	18		
337	Ferguson Creek	North Fork Coeur d'Alene River	51N	04E	18		
338	Unnamed Stream	Valitons Creek	51N	04E	18		
339	Steep Creek	North Fork Coeur d'Alene River	51N	04E	19		
340	Stevens Creek	North Fork Coeur d'Alene River	51N	04E	19		
341	Unnamed Stream	North Fork Coeur d'Alene River	51N	04E	19		
342	Jupiter Creek	North Fork Coeur d'Alene River	51N	04E	29		
343	Unnamed Stream	Jupiter Creek	51N	04E	29		
344	Stevens Creek	North Fork Coeur d'Alene River	51N	04E	30	NENW	
345	Unnamed Stream	Venus Creek	51N	04E	30	NESE	
346	Unnamed Stream	Venus Creek	51N	04E	30	NESW	
347	Unnamed Stream	Venus Creek	51N	04E	30	NWNE	
348	North Fork Coeur d'Alene River	Coeur d'Alene River	51N	04E	30	NWNW	
349	Stevens Creek	North Fork Coeur d'Alene River	51N	04E	30	NWNW	
350	Stevens Creek	North Fork Coeur d'Alene River	51N	04E	30	NWNW	L 1
351	Unnamed Stream	Venus Creek	51N	04E	30	NWSE	
352	Venus Creek	North Fork Coeur d'Alene River	51N	04E	30	NWSE	
353	North Fork Coeur d'Alene River	Coeur d'Alene River	51N	04E	30	NWSW	
354	North Fork Coeur d'Alene River	Coeur d'Alene River	51N	04E	30	NWSW	L 4
355	Venus Creek	North Fork Coeur d'Alene River	51N	04E	30	SENE	
356	Unnamed Stream	Venus Creek	51N	04E	30	SENW	L 3
357	Jupiter Creek	North Fork Coeur d'Alene River	51N	04E	30	SESE	
358	Unnamed Stream	Venus Creek	51N	04E	30	SESW	
359	Venus Creek	North Fork Coeur d'Alene River	51N	04E	30	SESW	
360	Unnamed Stream	Venus Creek	51N	04E	30	SWNE	
361	Venus Creek	North Fork Coeur d'Alene River	51N	04E	30	SWNE	
362	North Fork Coeur d'Alene River	Coeur d'Alene River	51N	04E	30	SWNW	
363	Venus Creek	North Fork Coeur d'Alene River	51N	04E	30	SWSE	
364	Jupiter Creek	North Fork Coeur d'Alene River	51N	04E	31	NENE	
365	Unnamed Stream	Jupiter Creek	51N	04E	31	NENE	
366	North Fork Coeur d'Alene River	Coeur d'Alene River	51N	04E	31	NENW	
367	North Fork Coeur d'Alene River	Coeur d'Alene River	51N	04E	31	NENW	L 2
368	Unnamed Stream	North Fork Coeur d'Alene River	51N	04E	31	NENW	
369	Unnamed Stream	North Fork Coeur d'Alene River	51N	04E	31	NENW	L 1
370	Unnamed Stream	North Fork Coeur d'Alene River	51N	04E	31	NENW	L 2
371	Venus Creek	North Fork Coeur d'Alene River	51N	04E	31	NENW	

# Attachment 1

	A	B	C	D	E	F	G
001	SOURCE NAME	TO TRIBUTARY	TOWNSHIP	RANGE	SECTION	QQ	SURVEY CODE AND NUMBER
372	Venus Creek	North Fork Coeur d'Alene River	51N	04E	31	NENW	L 1
373	Venus Creek	North Fork Coeur d'Alene River	51N	04E	31	NENW	L 2
374	Jupiter Creek	North Fork Coeur d'Alene River	51N	04E	31	NESE	
375	Jupiter Creek	North Fork Coeur d'Alene River	51N	04E	31	NESE	L 6
376	North Fork Coeur d'Alene River	Coeur d'Alene River	51N	04E	31	NESE	
377	Unnamed Stream	Jupiter Creek	51N	04E	31	NESE	L 6
378	Jack Creek	North Fork Coeur d'Alene River	51N	04E	31	NESW	
379	Unnamed Stream	North Fork Coeur d'Alene River	51N	04E	31	NWNE	
380	Unnamed Stream	North Fork Coeur d'Alene River	51N	04E	31	NWNE	
381	North Fork Coeur d'Alene River	Coeur d'Alene River	51N	04E	31	NWNW	
382	North Fork Coeur d'Alene River	Coeur d'Alene River	51N	04E	31	NWNW	L 1
383	North Fork Coeur d'Alene River	Coeur d'Alene River	51N	04E	31	NWNW	L 2
384	Short Creek	North Fork Coeur d'Alene River	51N	04E	31	NWNW	L 2
385	Venus Creek	North Fork Coeur d'Alene River	51N	04E	31	NWNW	L 2
386	Jack Creek	North Fork Coeur d'Alene River	51N	04E	31	NWSW	L 8
387	Jupiter Creek	North Fork Coeur d'Alene River	51N	04E	31	SENE	
388	Unnamed Stream	Jupiter Creek	51N	04E	31	SENE	
389	Jack Creek	North Fork Coeur d'Alene River	51N	04E	31	SENW	L 4
390	North Fork Coeur d'Alene River	Coeur d'Alene River	51N	04E	31	SENW	
391	North Fork Coeur d'Alene River	Coeur d'Alene River	51N	04E	31	SENW	L 4
392	North Fork Coeur d'Alene River	Coeur d'Alene River	51N	04E	31	SESE	
393	Jack Creek	North Fork Coeur d'Alene River	51N	04E	31	SWNE	L 4
394	North Fork Coeur d'Alene River	Coeur d'Alene River	51N	04E	31	SWNE	L 4
395	Unnamed Stream	North Fork Coeur d'Alene River	51N	04E	31	SWNE	L 4
396	Unnamed Stream	Jupiter Creek	51N	04E	32	NWNW	
397	Unnamed Stream	Jupiter Creek	51N	04E	32	NWSW	
398	Unnamed Stream	Jupiter Creek	51N	04E	32	SWNW	
399	Teddy Creek	North Fork Coeur d'Alene River	52N	03E	35		
400	Unnamed Stream	Teddy Creek	52N	03E	35		
401	Tourist Creek	North Fork Coeur d'Alene River	52N	03E	36		
402	Unnamed Stream	Teddy Creek	52N	03E	36		

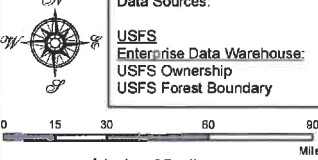
**Attachment 2**  
**Place of Use Map Fire Suppression - Water Right No. 94-09523A**  
**National Forests in Idaho and the Kaniksu, Lolo and Kootenai NF in Montana**

**Key to Features**

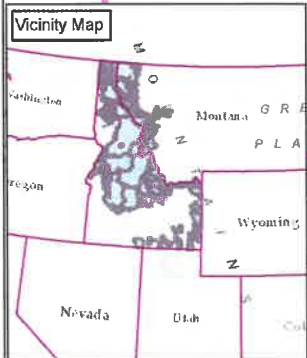
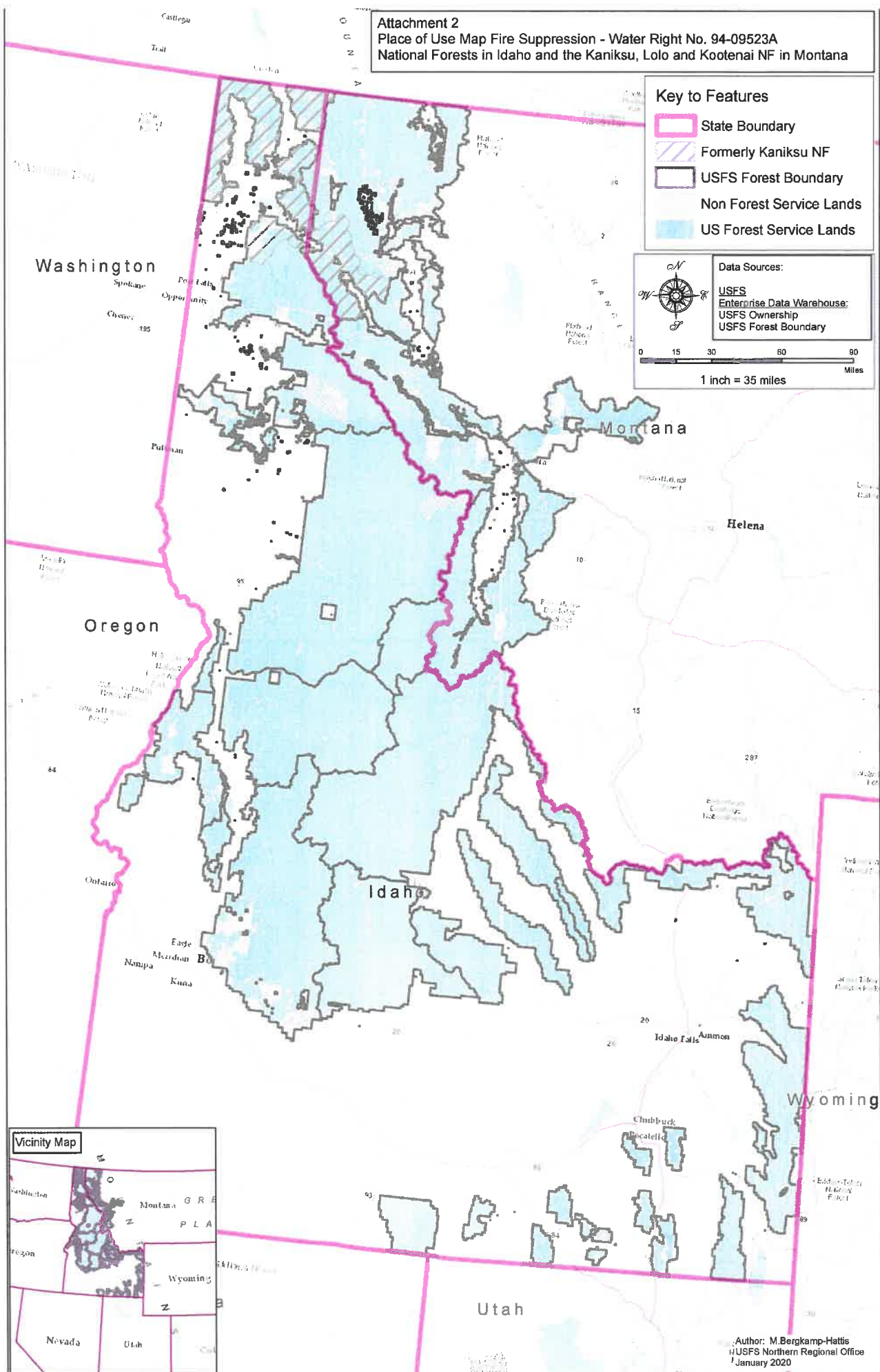
-  State Boundary
-  Formerly Kaniksu NF
-  USFS Forest Boundary
-  Non Forest Service Lands
-  US Forest Service Lands

**Data Sources:**

- USFS
- Enterprise Data Warehouse:
- USFS Ownership
- USFS Forest Boundary



0 15 30 60 90 Miles  
 1 inch = 35 miles



Author: M. Bergkamp-Hattis  
 USFS Northern Regional Office  
 January 2020